

PUBLIC MEETING SUMMARY

Project: **BBNA WO30 A2K Study**

Bristol Project No: 32250060

Reference: Initial Public Meeting - Aleknagik

Date of Meeting: March 25, 2026; ~6:00pm – ~ 7:20pm (Alaska Time)

Post discussion with local populous until 8:00pm (Alaska Time)

Location of Meeting: MS Team Meeting and Aleknagik School Gym

Call in Information: **907-313-2185**; Conference ID: **112 042 673#**

Participants:

- Jackie Hebnes, PE, Senior Civil Engineer, Bristol Engineering Services Company (Bristol) (*virtual attendance*)
- Breena Hickey, Planner, Bristol
- Brandon Shayan, Civil Engineer, Bristol
- Dan Breeden, Bristol Bay Native Association (BBNA) (*virtual attendance*)
- Basil Tilden, Curyung Tribal Council (*virtual attendance*)
- Miriam Olson, Aleknagik Traditional Council (ATC) (*virtual attendance*)
- Brandi Yeager, ATC (*virtual attendance*)
- See sign-in sheet (Attachment A).

Meeting Notification:

A Flyer about the Aleknagik to Koliganek Road Feasibility Study (A2K Study) and meeting information was developed and posted on March 10, 2026, see Attachment B.

Trip Summary:

Breena and Brandon traveled from Anchorage to Dillingham on Tuesday March 24, 2026, and then to Aleknagik on Wednesday March 25. The public meeting began at approximately 6:00pm in the Aleknagik School Gym, see Attachment C for photos of the meeting area and participants. Bristol gave a presentation and facilitated an open discussion about the meeting topic. The presentation and group discussion continued until approximately 8:00pm.

Meeting Purpose:

- Present A2K Study to the public. Presentation slides, public meeting #1 / community survey handout, and map handout were given to the public at the onset of the meeting. See Attachment D for the presentation slides, Attachment E for the public meeting #1 / community survey handout, and Attachment F for the map handout.

- Collect public feedback on the A2K Study.

Public Discussions:

1. Presentation Overview

- a. A detailed discussion was held regarding funding, major stakeholders, project need, project objectives, reinforcement of what exactly the study is and is not, project approach, and public / stakeholder involvement. The project team was introduced, and an overview of the project schedule was discussed.
- b. One participant asked what prompted this study.
 - i. BBNA supports communities through the Transportation Consortium which consists of seven tribes including New Stuyahok and Ekwok. This includes developing Long Range Transportation Plans in which it was documented that there was an interest in connections between Ekwok and New Stuyahok and considering connections to Dillingham. BBNA assisted with a grant to fund a study to evaluate the feasibility of these connections and included the communities along the Nushagak Drainage.
 - ii. The study is being funded by the Denali Commission and the Rebuilding American Infrastructure with Sustainability and Equity (RAISE) Grant.
- c. A participant asked if this study includes a NEPA Environmental Assessment.
 - i. Bristol responded that no, NEPA is a formal environmental assessment document. This study will address preliminary environmental considerations.
- d. A participant asked how the study area was chosen.
 - i. Bristol responded that the study area was determined based on terrain constraints (mountains and rivers) and land ownership boundaries, as well as determining what areas were needed to include the communities along the Nushagak Drainage.

2. Connectivity

- a. A detailed discussion was held regarding the movement of people, goods, and services. Current types of connectivity were also talked about within the study area: air, land, and water. Limitations to the current types of connectivity were talked about, including cost, seasons, and weather. Bristol emphasized the project's focus is to understand the feasibility of a year-round overland road connection.
 - i. A participant asked how Portage Creek would be accessed?
 1. Bristol responded that access to Portage Creek, if they desired access, may require a bridge crossing, or the development of a road terminating at a boat launch.
 - ii. Participants noted that prior to the construction of the Aleknagik Lake Road, traditional routes existed between Aleknagik and Dillingham. There is a

desire to maintain access to or preserve these traditional routes with any new development.

3. Considerations for New Roadway

- a. Bristol held a discussion on how a road connection could impact communities and things that need to be considered when discussing a new road connection including the following: the communities' needs and priorities, cultural and subsistence considerations, environmental and seasonal factors, and the economic and social impacts. Throughout the discussion, participants brought up the following:
 - i. Concerns about increased traffic and congestion, particularly new parking areas and boat launches were discussed.
 - ii. Interest in incorporating safety features such as high visibility striping or reflective markers for improved visibility during low visibility conditions.
 - iii. Questions regarding winter maintenance responsibilities, in which Bristol responded that this remains to be determined and will be addressed in the feasibility study.
 - iv. Suggestions to review the road system connecting Nome and surrounding villages as a potential case study.
 - v. There was a discussion about the threat of drugs and alcohol throughout the region with increased connectivity. The community of Aleknagik is already connected to Dillingham, so upriver communities are more at risk of this becoming an increased issue. One participant mentioned that some upriver communities already have direct flights to Anchorage which allows access to drugs and alcohol. The participant believes that there is a big fear around road connections and the increase of access to drugs and alcohol, but that these issues are already a present problem within communities.
 - vi. One participant noted that there is currently no school bus service in Aleknagik, which shows some of the community's transportation challenges. Bristol is currently working on the Dillingham Transit Plan, and while this may not directly discuss the school bus service, the plan will provide a strategy for designing, operating, and improving public transportation for Aleknagik and Dillingham.

4. Evaluation of Opportunities and Threats

- a. Opportunities
 - i. Decreased travel costs.
 - ii. Improved public safety to the upriver communities through increased access for troopers and medical support when needed.
 - iii. Increased access to subsistence activities.
 - iv. Reduced reliance on barged fuel and lower risk of fuel spills along river systems.

- b. Threats
 - i. Increased traffic through the community.
 - ii. Potential social impacts, including concerns about increased drug and alcohol issues.
 - iii. Jurisdictional challenges between state, city, and VPSO enforcement.
 - iv. Concerns about inequities in the judicial system.
 - v. Increased risk of wildlife collisions.
 - vi. More littering and improper waste disposal (e.g., dumping fish waste).
 - vii. Risk of overharvesting subsistence resources (e.g., commercial berry picking), potentially impacting local availability and increasing costs.
- 5. Potential Road Locations
 - a. A detailed discussion was held assessing where a road could go with considerations of different variables in mind. Considerations for the public included geographic feasibility, environmental factors, cultural and historical resources, and community preference. A general discussion was had with no detailed routes provided, however, after the meeting, one participant marked up a map with snowmachine trails and an old dog team trail that are used to connect to upriver communities (see Attachment C).
- 6. Other Questions and Comments
 - a. A participant emphasized the importance of respecting local knowledge and ensuring the project team engages with integrity and genuinely listens to community concerns.

Attachments:

- A. Sign in Sheet (1 pages)
- B. Flyer (1 page)
- C. Photos: Public Meeting Area (4 pages)
- D. Presentation Slides (5 pages)
- E. Public Meeting #1 / Community Survey Handout (2 pages)
- F. Map Handout (1 page)

ATTACHMENT A

Aleknagik, Alaska
 BBNA Aleknagik to Koliganek Road Feasibility Study
 Wednesday, ~~February 18, 2026~~ March 25, 2026

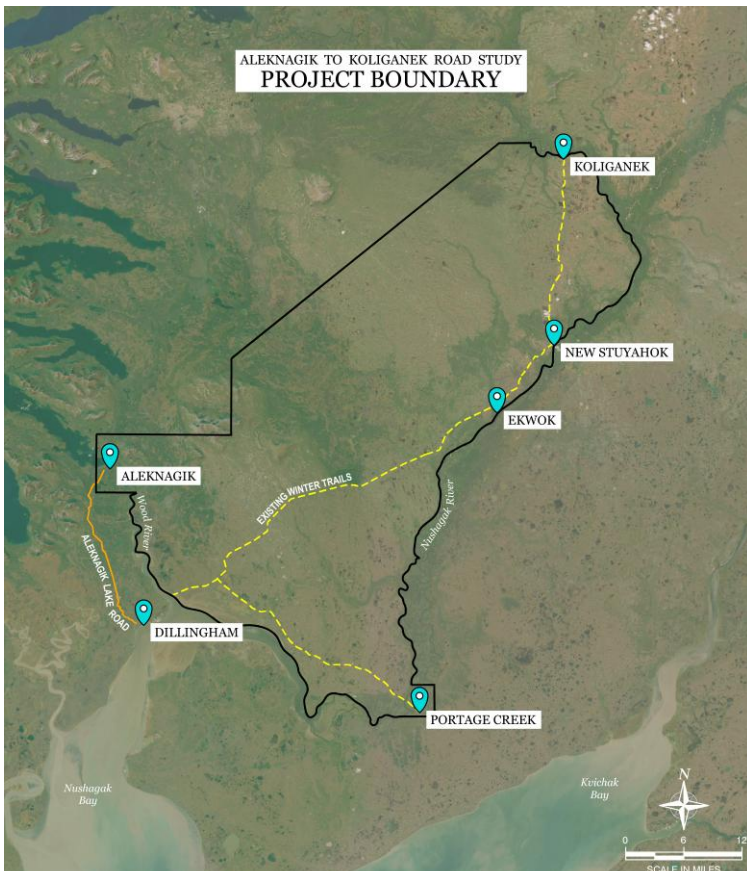
Sign-In Sheet

	Name	Phone (optional)	Email (optional)
	1. Will Chaney	907-843-1489	wchaney@nashapik.coop
Ticket →	2. Nina Tinker	907 843-2106	
Ticket	3. Virginia Andrews	907-843-1903	
Ticket	4. Leland Andrews	907-843-2449	lelandm.andrews@gmail.com
Ticket	5. Bruce Elutsik	907-843-1045	
	6. Candace Chythlak	907 843-1610	chythlak@gmail.com
Ticket	7. Allen Elutsik	907-843-1737	alutiks@hotmail.com
	8. Randy Tinker	907-843-1166	randytinker@icloud.com
Ticket	9. Kay Andrews	907-843-1905 / ⁸⁴² 5953	administrator@aleknagik.ak.gov
	10. Melanie Noden	907.843.3063	
Ticket	11. Vera E Andrews	907 843-1665	
Ticket	12. Rachel Andrew	907 843-2534	
	13.		
	14.		
	15.		
	16.		
	17.		
	18.		
	19.		
	20.		

ATTACHMENT B

BBNA ALEKNAGIK TO KOLIGANEK ROAD FEASIBILITY STUDY

ALEKNAGIK COMMUNITY MEETING



**Wednesday,
March 25, 2026
6 PM**

- Aleknagik School Gym
- Voice your opinions about the project
- Refreshments provided
- Door prizes

For more information:

Jackie Hebnes
(907) 743-9314

jhebnes@bristol-companies.com

We are excited to announce the launch of the BBNA Aleknagik–Koliganek Road Feasibility Study, an early-stage project to evaluate the potential for developing a road connection between the communities of Aleknagik, Ekwok, New Stuyahok, Koliganek, and Portage Creek.

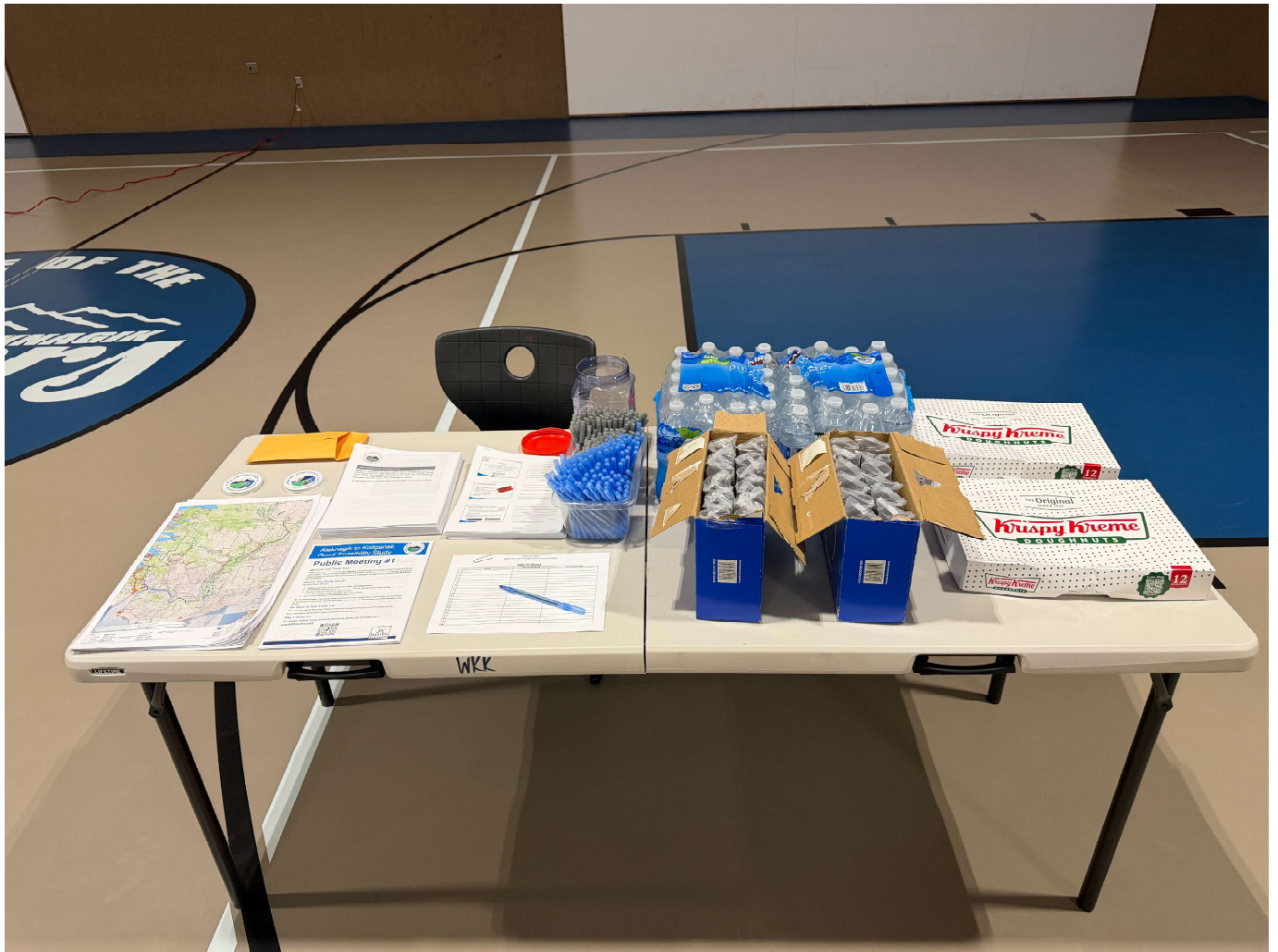
Come learn more about this project at the first round of community meetings. The project planners will be available for any questions and to receive feedback from the public. Refreshments and door prizes will be provided for those that attend. Invite your friends and family so the whole community is involved!

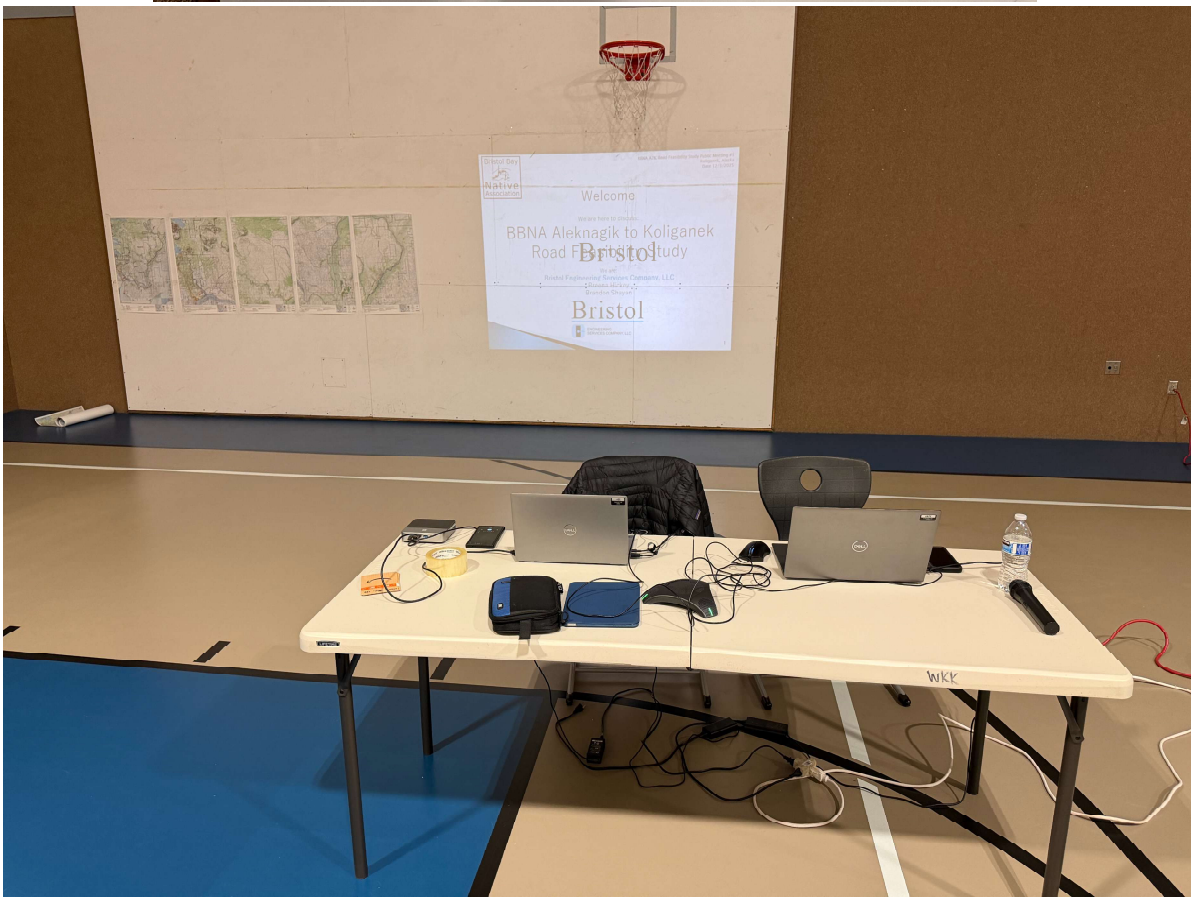
Posted: 3/10/2026

**Check out the website for more
information: A2KRoadStudy.com**



ATTACHMENT C





ATTACHMENT D

Bristol Bay Native Association

BBNA A2K Road Feasibility Study Public Meeting #1
Koliganek, Alaska
Date 12/3/2025

Welcome

We are here to discuss:

BBNA Aleknagik to Koliganek Road Feasibility Study

We are:
Bristol Engineering Services Company, LLC
Breana Hickey
Brandon Shayan




1

1

Presentation Overview

- ▶ Project Background / Information
- ▶ Public Involvement Overview
- ▶ Project Team
- ▶ Project Schedule/Next Steps
- ▶ What is Connectivity?
- ▶ Community Input on Roadway
 - Opportunities and Threats
 - Where Could a Road go?
- ▶ Questions



2

2

Project Champion and Funding

- ▶ Project Champion
 - Bristol Bay Native Association Department of Transportation and Infrastructure Development
- ▶ Funding Sources
 - Rebuilding American Infrastructure with Sustainability and Equity (RAISE) Grant Program, FY 2023
 - Denali Commission (DC)



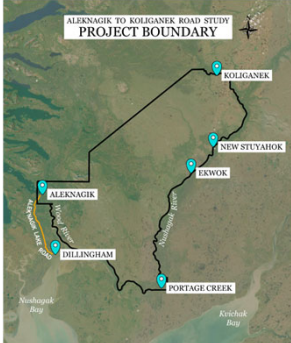


3

3

Primary Stakeholders

- ▶ Community of,
 - Aleknagik
 - Dillingham
 - Ekwok
 - Koliganek
 - New Stuyahok
 - Portage Creek



4

4

Project Need

- ▶ Understand ways to reduce costs of delivering goods, services, and people
- ▶ Provide year-round all-weather access to communities to enhance public safety
- ▶ Provide information to communities about connectivity feasibility

5

5

Project Objectives

- ▶ Understand communities' thoughts about road connections
- ▶ Evaluate cultural, environmental, economic, and social impacts of a road connection
- ▶ Evaluate the feasibility of road connections
- ▶ Develop a report that summarizes the findings

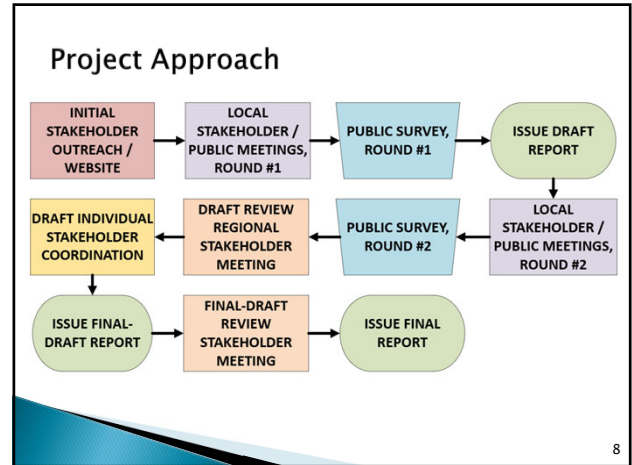
6

6

Project Do's and Do Not's

What This Study Does	What This Study Does NOT Do
<ul style="list-style-type: none"> ✔ Considers the possibility of road connections between Aleknagik, Portage Creek, Ekwok, New Stuyahok, and Kotiganek. ✔ Evaluates both pros and cons of the potential roads including economic, environmental, social, and cultural considerations. ✔ Identifies if communities want road connections or not. ✔ Helps communities make informed decisions about road connection planning. ✔ Identifies potential road corridors based on community input and traditional local knowledge. 	<ul style="list-style-type: none"> ✘ Make decisions for communities. ✘ Build roads. ✘ Solicit input from outside interests. ✘ Promote the Nuyakuk Hydroelectric Project. ✘ Promote mining or resource development.

7



8

Project Approach

- ▶ Study Development (Draft, Final-draft, Final)
 - Public Involvement
 - Cultural Resources
 - Environmental
 - Economic Analysis
 - Geotechnical
 - Land Status and Corridor Development

9

Public / Stakeholder Involvement Overview

- ▶ Purpose of Public Engagement
 - Ensure transparency, inclusivity, and collaboration throughout the study
 - Gather local insights to inform reporting
- ▶ Engagement Tools
 - Project Website: Project updates, meeting materials, contact information
 - Public Surveys: To gather broad input
 - In-Person & Virtual Meetings: Local and regional reach
 - Target Outreach: For key stakeholders and communities

10

Project Team

<ul style="list-style-type: none"> ▶ Agnew::Beck <ul style="list-style-type: none"> ◦ Economic Analysis ◦ Public Involvement ▶ Bristol <ul style="list-style-type: none"> ◦ Land Status Mapping ◦ Public Involvement ◦ Analysis and Reporting ◦ Project Management 	<ul style="list-style-type: none"> ▶ Midnight Sun Environmental <ul style="list-style-type: none"> ◦ Environment Analysis ▶ Shannon & Wilson <ul style="list-style-type: none"> ◦ Geotechnical Reporting ▶ True North <ul style="list-style-type: none"> ◦ Cultural Resources Report
------------------------------------------------------------------------------------------------------------------------------------------------------------------------------------------------------------------------------------------------------------------------------------------------------------------------------------------------------------------------------------	---------------------------------------------------------------------------------------------------------------------------------------------------------------------------------------------------------------------------------------------------------------------------------------------------------------------------------------------------------------------------------------------------------

11

Project Schedule / Next Steps

- ▶ Draft A2K Study March / April 2026
- ▶ Public Meeting Round #2 April / May 2026
- ▶ Final Draft A2K Study August 2026
- ▶ Final A2K Study December 2026

Check out the website: A2KRoadStudy.com

12



13

13

What is Connectivity?

- ▶ This Project Considers: Movement of people, goods and services
- ▶ Current Connectivity in Study Area
 - Air, Land, and Water
- ▶ Each mode has limitations: Cost, Seasons, and Weather.
- ▶ This Project's Focus is to understand the feasibility of a year-round overland road connection.

Let's talk about this together!

14

14

Considerations for New Roadways

- ▶ Community Needs & Priorities
 - How would a road connection affect your daily life (travel, access to subsistence activities, school events, church events, visiting family and friends)?
 - What destinations are most important for you (nearby communities, subsistence areas)?
 - Are there times of year when better transportation is especially needed?

15

15

Considerations for New Roadways

- ▶ Cultural & Subsistence Considerations
 - What traditional hunting, fishing, or gathering areas might the road affect?
 - Are there cultural or sacred sites that should be avoided?
 - How might a road change seasonal travel by snowmachine, boat, or ATV?

16

16

Considerations for New Roadways

- ▶ Environmental & Season Factors
 - Are there areas that are especially important to avoid (wetlands, caribou migration paths, fish streams)?
 - How do you see climate change affecting the land in the coming years?

17

17

Considerations for New Roadways

- ▶ Economic & Social Impacts
 - What opportunities might the road bring (jobs, lower costs of goods, tourism)?
 - What risks do you see (outside access to subsistence resources, increased alcohol/drug trafficking, loss of local control)?

18

18

Evaluation of Opportunities and Threats

- ▶ As a group let's discuss. Think of a road to neighboring communities.
- ▶ **Opportunities:**
What good things could a road bring in the future?
- ▶ **Threats:**
What risks could come with a road, or from outside forces?

19

19

Opportunities and Threats

- ▶ Community Needs & Priorities
- ▶ Cultural & Subsistence Considerations
- ▶ Environmental & Season Factors
- ▶ Economic & Social Impacts

20

20



21

21

Where Could a Road Go?

- ▶ Things to consider:
 - Geographic feasibility
 - Terrain challenges (mountains, rivers, wetlands, permafrost)
 - Accessibility in all seasons
 - Environmental Factors
 - Sensitive ecosystems, wildlife corridors
 - Subsistence resource areas
 - Cultural and Historical Resources
 - Sites of cultural or historical importance
 - Community Preferences
 - Connections people would find useful
 - Proximity of road to the townsite

22

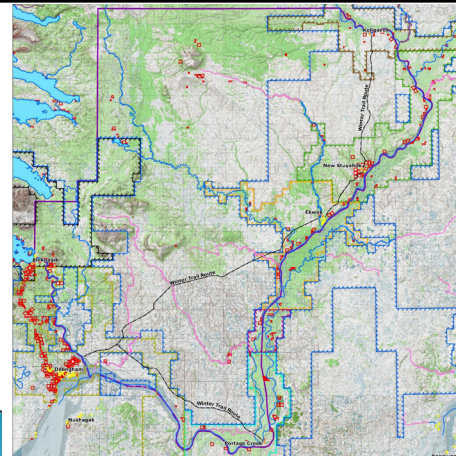
22

Where Could a Road Go?

- ▶ We want to hear from you!
 - If a road were considered, where would you want it to go, or not go?
 - Where should be avoided?
- ▶ Let's mark up some maps!!!
- ▶ Also, Let's do some surveys!!!

23

23



24

24

Questions or Comments?

25

25



26

26

Thank you for your participation!



27

27

ATTACHMENT E

Aleknagik to Koliganek Road Feasibility Study



Public Meeting #1

Welcome and Thank You!

Thank you for attending the public meeting for the Aleknagik to Koliganek Road Feasibility Study (A2K Study). This is an early-stage planning project that evaluates the potential for developing road connections between the communities of Aleknagik, Portage Creek, Ekwok, New Stuyahok, and Koliganek.

What Is This Study About?

The A2K Study aims to:

- Gather input from local residents, tribes, and stakeholders;
- Understand possible impacts on social, cultural, and environmental values;
- Analyze potential economic opportunities;
- Evaluate possible routes between the communities;
- Summarize findings in a comprehensive report.

⊘ Important Note: This study does not propose road construction at this stage. Its purpose is to understand community interest and determine whether a road project could be feasible in the future.

We Want To Hear From You!

Your input is vital to this study. Please share your thoughts throughout online public survey:

More information about the survey on the back of this handout.

Stay Connected

For updates, meeting notices, and study documents, please visit the project website:

www.A2KRoadStudy.com



Aleknagik to Koliganek Road Feasibility Study



Community Survey

The goal of this survey is to collect feedback around the potential impacts on the cost of living, quality of life, regional travel patterns, and subsistence activities from the people living in the communities that could potentially be affected by future road connections. This survey will also help gauge community interest and document community concerns around future road connections.



Survey respondents will be eligible to be entered into a drawing for an Apple iPad.

Visit the project website to access the survey and for more information on the study:

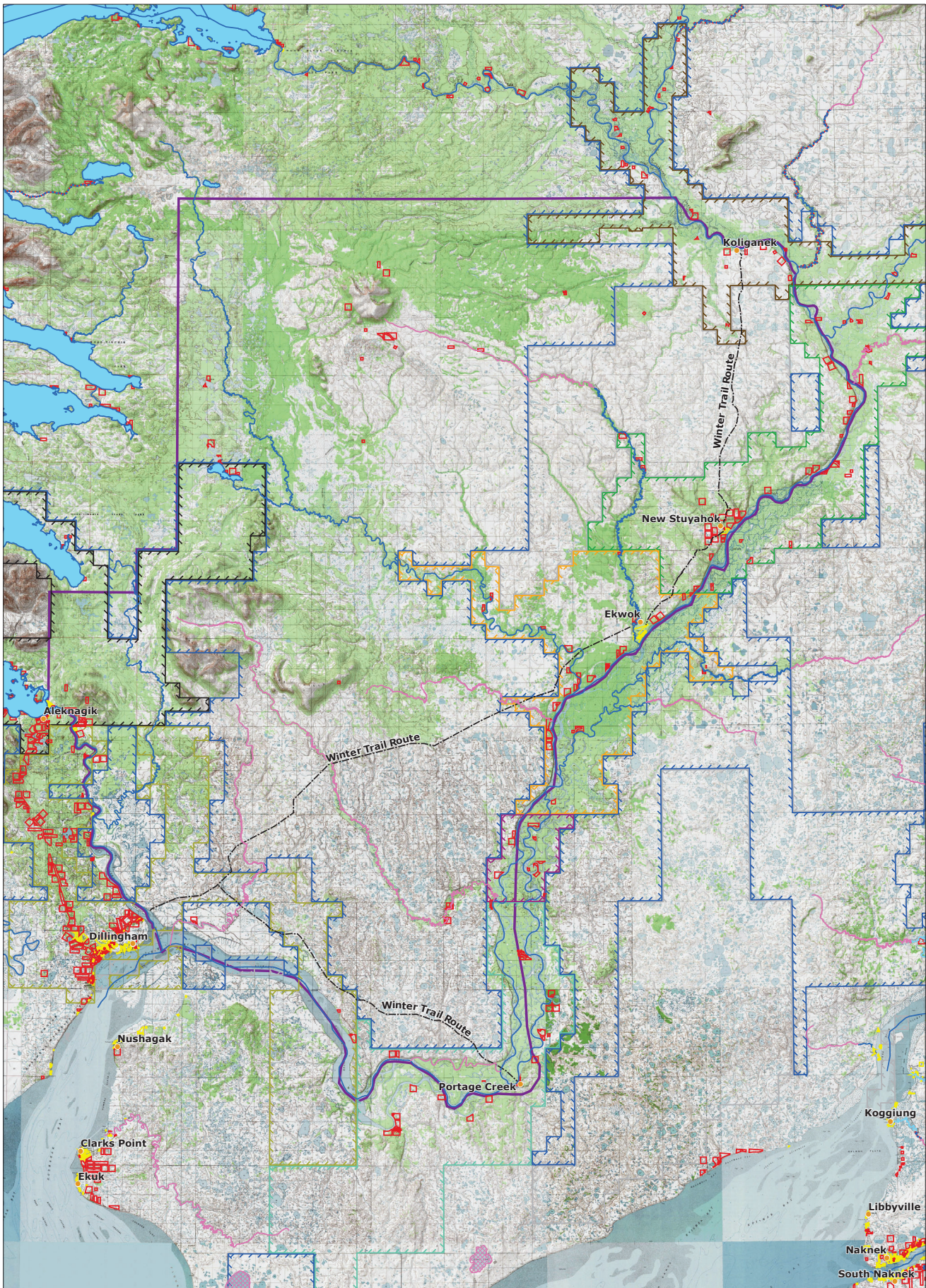
A2KRoadStudy.com



BBNA is committed to ensuring that this study reflects the voices and priorities of our member Tribal communities, with a focus on cultural respect, economic opportunity, and community-driven decision-making.



ATTACHMENT F



Sources:
 BLM: https://gis.blm.gov/akarcgis/rest/services/Land_Status/BLM_AK_Land_Status_Conveyed_Lands/FeatureServer
 State of Alaska Geo Portal: Navigable Waters
 U.S. Fish and Wildlife Service: https://services.arcgis.com/QVNGdaPbd4LUkLV/arcgis/rest/services/FWS_R7_Realty_BLM_Land_Status_feature_layer/FeatureServer
 Note:
 Select source features were generalized for map readability.

- | | | | | |
|-----------------|---------------------------------------|---------------|-------------------|----------------------------------------|
| Legend | City | Navigable | Dillingham | BLM's Land Status of Alaska (3/9/2017) |
| Conflict | BLM AK Native Allotment Conveyed Land | Unknown | Ekwok | Study Boundary |
| Unknown | BLM AK Private Conveyed Land | Aleknagik | Koliganek | |
| Tidal Influence | New Stuyahok | Portage Creek | Select State Land | |
| Winter Trail | BBNC (Other) | | | |



DATUM:
 NAD83
 PROJECTION:
 SP AK Z6 FT
 DATE:
 10/3/2025

