

Bristol Bay Native Association


BBNA A2K Road Feasibility Study Public Meeting #1  
Koliganek, Alaska  
Date 12/3/2025

## Welcome

We are here to discuss:

# BBNA Aleknagik to Koliganek Road Feasibility Study

We are:  
Bristol Engineering Services Company, LLC  
Breana Hickey  
Brandon Shayan



1

---

---

---

---

---

---


---

---

1

## Presentation Overview

- ▶ Project Background / Information
- ▶ Public Involvement Overview
- ▶ Project Team
- ▶ Project Schedule/Next Steps
- ▶ What is Connectivity?
- ▶ Community Input on Roadway
  - Opportunities and Threats
  - Where Could a Road go?
- ▶ Questions



2

---

---

---

---

---

---




---

---

2

## Project Champion and Funding

- ▶ Project Champion
  - Bristol Bay Native Association Department of Transportation and Infrastructure Development
- ▶ Funding Sources
  - Rebuilding American Infrastructure with Sustainability and Equity (RAISE) Grant Program, FY 2023
  - Denali Commission (DC)

3

---

---

---

---

---

---

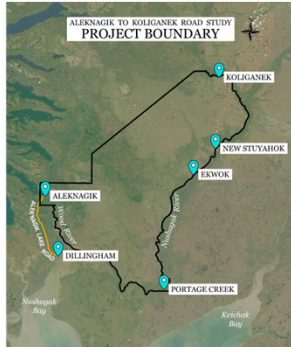
---

---

3

### Primary Stakeholders

- ▶ Community of,
  - Aleknagik
  - Dillingham
  - Ekwok
  - Koliganek
  - New Stuyahok
  - Portage Creek



4

4

---

---

---

---

---

---

---

---

### Project Need

- ▶ Understand ways to reduce costs of delivering goods, services, and people
- ▶ Provide year-round all-weather access to communities to enhance public safety
- ▶ Provide information to communities about connectivity feasibility

5

5

---

---

---

---

---

---

---

---

### Project Objectives

- ▶ Understand communities' thoughts about road connections
- ▶ Evaluate cultural, environmental, economic, and social impacts of a road connection
- ▶ Evaluate the feasibility of road connections
- ▶ Develop a report that summarizes the findings

6

6

---

---

---

---

---

---

---

---

### Project Do's and Do Not's

- |  |   |
|--|---|
| <p><b>What This Study Does</b></p> <ul style="list-style-type: none"> <li>✓ Considers the possibility of road connections between Aleknagik, Portage Creek, Ekwook, New Stuyahok, and Kotiganeek.</li> <li>✓ Evaluates both pros and cons of the potential roads including economic, environmental, social, and cultural considerations.</li> <li>✓ Identifies if communities want road connections or not.</li> <li>✓ Helps communities make informed decisions about road connection planning.</li> <li>✓ Identifies potential road corridors based on community input and traditional local knowledge.</li> </ul> | <p><b>What This Study Does NOT Do</b></p> <ul style="list-style-type: none"> <li>✗ Make decisions for communities.</li> <li>✗ Build roads.</li> <li>✗ Solicit input from outside interests.</li> <li>✗ Promote the Nuyakuk Hydroelectric Project.</li> <li>✗ Promote mining or resource development.</li> </ul> |
|--|---|

7

7

---

---

---

---

---

---

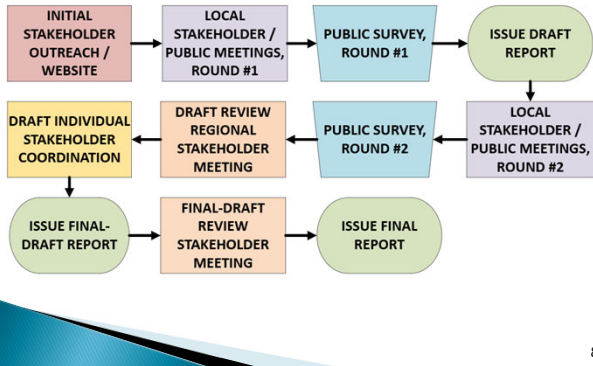
---

---

---

---

### Project Approach



8

8

---

---

---

---

---

---

---

---

---

---

### Project Approach

- ▶ Study Development (Draft, Final-draft, Final)
  - Public Involvement
  - Cultural Resources
  - Environmental
  - Economic Analysis
  - Geotechnical
  - Land Status and Corridor Development

9

9

---

---

---

---

---

---

---

---

---

---

### Public / Stakeholder Involvement Overview

- ▶ Purpose of Public Engagement
  - Ensure transparency, inclusivity, and collaboration throughout the study
  - Gather local insights to inform reporting
- ▶ Engagement Tools
  - Project Website: Project updates, meeting materials, contact information
  - Public Surveys: To gather broad input
  - In-Person & Virtual Meetings: Local and regional reach
  - Target Outreach: For key stakeholders and communities

10

10

---

---

---

---

---

---

---

---

### Project Team

- |  |   |
|--|---|
| <ul style="list-style-type: none"> <li>▶ Agnew::Beck           <ul style="list-style-type: none"> <li>◦ Economic Analysis</li> <li>◦ Public Involvement</li> </ul> </li> <li>▶ Bristol           <ul style="list-style-type: none"> <li>◦ Land Status Mapping</li> <li>◦ Public Involvement</li> <li>◦ Analysis and Reporting</li> <li>◦ Project Management</li> </ul> </li> </ul> | <ul style="list-style-type: none"> <li>▶ Midnight Sun Environmental           <ul style="list-style-type: none"> <li>◦ Environment Analysis</li> </ul> </li> <li>▶ Shannon &amp; Wilson           <ul style="list-style-type: none"> <li>◦ Geotechnical Reporting</li> </ul> </li> <li>▶ True North           <ul style="list-style-type: none"> <li>◦ Cultural Resources Report</li> </ul> </li> </ul> |
|--|---|



11

11

---

---

---

---

---

---

---

---

### Project Schedule / Next Steps

- ▶ Draft A2K Study March / April 2026
- ▶ Public Meeting Round #2 April / May 2026
- ▶ Final Draft A2K Study August 2026
- ▶ Final A2K Study December 2026

Check out the website: [A2KRoadStudy.com](http://A2KRoadStudy.com)



12

12

---

---

---

---

---

---

---

---



13

13

---

---

---

---

---

---

---

---

### What is Connectivity?

- ▶ This Project Considers: Movement of people, goods and services
- ▶ Current Connectivity in Study Area
  - Air, Land, and Water
- ▶ Each mode has limitations: Cost, Seasons, and Weather.
- ▶ This Project's Focus is to understand the feasibility of a year-round overland road connection.

**Let's talk about this together!**

14

14

---

---

---

---

---

---

---

---

### Considerations for New Roadways

- ▶ Community Needs & Priorities
  - How would a road connection affect your daily life (travel, access to subsistence activities, school events, church events, visiting family and friends)?
  - What destinations are most important for you (nearby communities, subsistence areas)?
  - Are there times of year when better transportation is especially needed?

15

15

---

---

---

---

---

---

---

---

### Considerations for New Roadways

- ▶ Cultural & Subsistence Considerations
  - What traditional hunting, fishing, or gathering areas might the road affect?
  - Are there cultural or sacred sites that should be avoided?
  - How might a road change seasonal travel by snowmachine, boat, or ATV?

16

16

---

---

---

---

---

---

---

---

### Considerations for New Roadways

- ▶ Environmental & Season Factors
  - Are there areas that are especially important to avoid (wetlands, caribou migration paths, fish streams)?
  - How do you see climate change affecting the land in the coming years?

17

17

---

---

---

---

---

---

---

---

### Considerations for New Roadways

- ▶ Economic & Social Impacts
  - What opportunities might the road bring (jobs, lower costs of goods, tourism)?
  - What risks do you see (outside access to subsistence resources, increased alcohol/drug trafficking, loss of local control)?

18

18

---

---

---

---

---

---

---

---

### Evaluation of Opportunities and Threats

- ▶ As a group let's discuss. Think of a road to neighboring communities.
- ▶ **Opportunities:**  
What good things could a road bring in the future?
- ▶ **Threats:**  
What risks could come with a road, or from outside forces?

19

19

---

---

---

---

---

---

---

---

### Opportunities and Threats

- ▶ Community Needs & Priorities
- ▶ Cultural & Subsistence Considerations
- ▶ Environmental & Season Factors
- ▶ Economic & Social Impacts

20

20

---

---

---

---

---

---

---

---



21

21

---

---

---

---

---

---

---

---

### Where Could a Road Go?

- ▶ Things to consider:
  - Geographic feasibility
    - Terrain challenges (mountains, rivers, wetlands, permafrost)
    - Accessibility in all seasons
  - Environmental Factors
    - Sensitive ecosystems, wildlife corridors
    - Subsistence resource areas
  - Cultural and Historical Resources
    - Sites of cultural or historical importance
  - Community Preferences
    - Connections people would find useful
    - Proximity of road to the townsite

22

22

---

---

---

---

---

---

---

---

### Where Could a Road Go?

- ▶ We want to hear from you!
  - If a road were considered, where would you want it to go, or not go?
  - Where should be avoided?
- ▶ Let's mark up some maps!!!
- ▶ Also, Let's do some surveys!!!

23

23

---

---

---

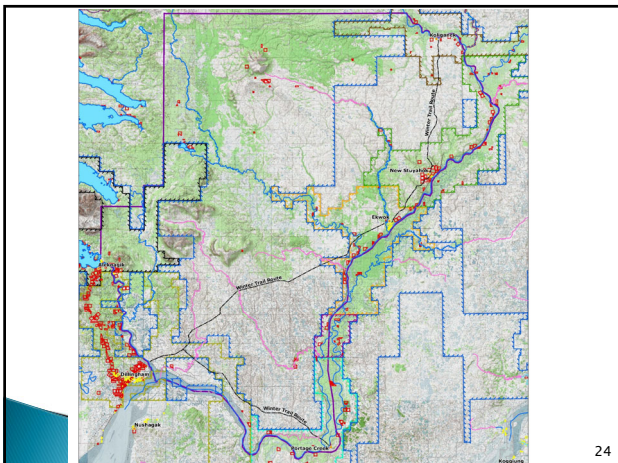
---

---

---

---

---



24

24

---

---

---

---

---

---

---

---



25

---

---

---

---

---

---

---

---



26

---

---

---

---

---

---

---

---



27

---

---

---

---

---

---

---

---