

## PUBLIC MEETING SUMMARY

Project: **BBNA WO30 A2K Study**

Bristol Project No: 32250060

Reference: Initial Public Meeting – New Stuyahok

Date of Meeting: October 23, 2025; ~4:00pm – ~5:20pm (Alaska Time)

Location of Meeting: CQ Building MS Team Meeting or Teleconference.

Call in Information: **907-313-2185**; Conference ID: **995 698 466#**

Participants:

- Isaac Pearson, PE, Senior Civil Engineer, Bristol Engineering Services Company (Bristol)
- Brandon Shayan, Civil Engineer, Bristol
- Breena Hickey, Planner, Bristol (*virtual attendance*)
- Dan Breedon, Bristol Bay Native Association (BBNA) (*virtual attendance*)
- See sign-in sheet (Attachment A).

Meeting Notification:

A Flyer about the A2K Study and meeting information was developed and posted on September 23, 2025. See attachments section for the flyer.

Trip Summary:

Isaac and Brandon traveled from Dillingham to New Stuyahok on Thursday, October 23. The meeting began at 4:00pm. Bristol Engineering (Bristol) gave the presentation. The Q&A and group discussion continued until 5:20pm.

Meeting Purpose:

- Present A2K Study to the public. Presentation slides, public meeting #1 handout / community survey, and handout maps were given to the public for the presentation meeting. See attachments section for the presentation slides, public meeting #1 handout / community survey, and handout map.
- Collect public feedback on the A2K Study.

Public Discussions:

1. Presentation Overview

- a. A detailed discussion was held regarding funding, major stakeholders, project need, project objectives, reinforcement of what exactly the study is and is not, project approach, and public / stakeholder involvement. The project team was introduced, and an overview of the project schedule was discussed.

- i. Participant asked about part of Tribe's LRTP to connect to neighbors.
  - 1. Presenter informed participant that this project is the first step in a very big discussion about connection.
- ii. Participant asked if airport improvements are being looked at to reduce cost of goods and services.
  - 1. Presenter explained that this project is not directly looking into improving air travel, but it will be noted as public comment and researched.
  - 2. Presenter added that projects congruent to this feasibility study are also being further investigated. An example that was given by the presenter was about a study that was done in which a participant from the public meeting in Ekwok mentioned occurred in the 1960's. The presenter brought up how Bristol is conducting further research on the 1960's project that was brought to Bristol's attention during the public meeting in Ekwok.
  - 3. Presenter reinforced the fact that this project is in the preliminary research and public outreach phase to the participants.
- iii. Participant asked how many other villages want road connections.
  - 1. Presenter explained that Bristol doesn't understand if a road is something the community's desire.
- iv. Participant expressed concern about big construction companies coming into New Stuyahok and not hiring locally from the village.
  - 1. Presenter explained that local construction projects typically hire local qualified individuals. Presenter also reaffirmed that construction would be far into the future and informed the participants that tribes can take steps and contract mechanisms to ensure local hires.
- v. Participant asked about the idea of only connecting Koliganek, New Stuyahok, and Ekwok. Participant did not want to connect to Aleknagik nor did the participant see the benefit to connecting to Aleknagik.
  - 1. Presenter explained that part of this study is to investigate different connection options.
- vi. Participant liked the idea of connecting to neighbors, Koliganek and Ekwok – it could be very beneficial especially when barges cannot make it all the way up to the upper communities of New Stuyahok and Koliganek that are above Ekwok.
- vii. Participant expressed concerns about the trouble that a connection to Aleknagik would bring to New Stuyahok. A particular concern that the participant had was that a road connection would invite / advance the Nuyakuk River Hydroelectric Project.

- viii. Presenter informs participants that Historic Sites will be discovered as Bristol continues to research for the study and that Historic Sites will not be made available to the public, but it will be provided to the Tribal Council.
    - 1. Presenter explained how an abbreviated version will be incorporated into the study.
  - ix. Participant asked about maintenance of the road and who will maintain it.
    - 1. Presenter informed participant that the study will identify the subject matter and review information regarding maintenance.
2. Connectivity
    - a. A detailed discussion was held regarding the movement of people, goods, and services. Current types of connectivity were also talked about within the study area: air, land, and water. Limitations to the current types of connectivity were talked about, including cost, seasons, and weather. The presenter emphasized the project's focus is to understand the feasibility of a year-round overland road connection.
  3. Considerations for New Roadways
    - a. The presenter prepared the participants to consider different variables for the community in their assessment for new roadways, mainly community needs and priorities, cultural and subsistence considerations, environmental and season factors, and economic and social impacts.
  4. Evaluation of Opportunities and Threats
    - a. Opportunities
      - i. Better access to healthcare during bad weather
      - ii. Cheaper freight movement from Dillingham
      - iii. Access to more subsistence areas
      - iv. Connect the three villages together (Ekwok, New Stuyahok, and Koliganek)
        - 1. Ekwok would be the best place for a bigger airport if these communities were connected
      - v. More access to gravel resources
    - b. Threats
      - i. Drunk driving on the road
      - ii. Non-local people coming into Dillingham and taking it over. This concept could happen to New Stuyahok with more connections.
      - iii. Animal encounters on the road
      - iv. The advancement of the Nuyakuk River Hydroelectric Project
      - v. Increased drug / alcohol use and availability
      - vi. Access for adolescents to do what they want / get into mischief

- vii. Could ruin subsistence areas
- viii. Could diminish / hurt fish and game populations as well as all other species – need to study this more before moving forward
- ix. Road could create dust
- x. Development could mean cutting down more trees

c. Other Notes and Comments

- i. New Stuyahok is warmer in general
- ii. Participant commented on an improved airstrip for New Stuyahok
- iii. Participant mentioned in the past, people that needed medical care were able to receive it, even with bad weather. All the recent deaths have been alcohol related (last 5 to 10 years).
- iv. Presenter explained that Department of Environmental Conservation, Alaska Department of Fish and Game, and U.S. Fish and Wildlife Service (Alaska), are stakeholders – they won't have individual reports, but the study can provide next steps – what is needed before moving forward
- v. Caribou herds are diminishing in the area. The community of New Stuyahok have not had the heard in their area for some time.
- vi. Cultural Considerations – Connections could be both good and bad for subsistence
- vii. Environmental considerations – Winds have been stronger, permafrost is melting, more swamp areas, more vegetation (alders, willows, etc.), warmer than it used to be. This could impact current/typical modes of travel.
  - 1. Participant mentioned the desire for a wind turbine
- viii. Participant had a question about how the study / road would tackle river crossings
  - 1. The study would look at routes, and some rivers would be crossed, swamp or bad areas would be avoided if possible
- ix. It was brought up multiple times that participants would like a connection to Ekwook and Koliganek rather than all the way to Aleknagik

5. Potential Road Locations

- a. A detailed discussion was held assessing where a road could go with considerations of different variables in mind. Considerations for the public included geographic feasibility, environmental factors, cultural and historical resources, and community preference. No detailed routes were provided, general discussion only.

6. Questions

- a. Any last-minute questions were answered, and comments were noted.

Attachments:

1. Sign in Sheet (1 page)
2. Flyer (1 page)
3. Presentation slides (9 pages)
4. Public meeting #1 handout / community survey (2 pages)
5. Handout map (1 page)

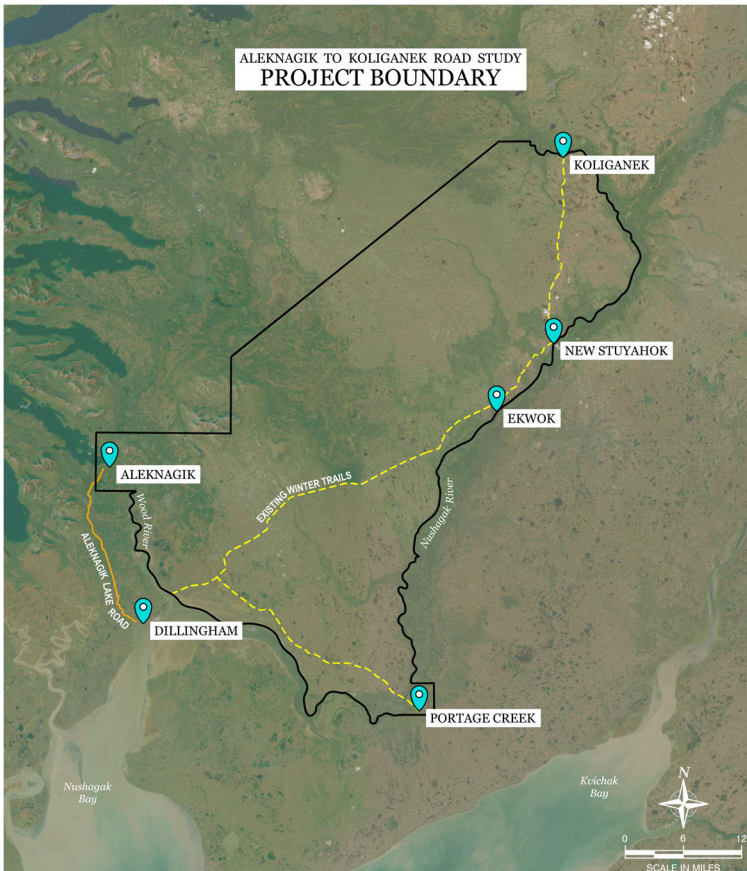
New Stuyahok, Alaska  
BBNA Aleknagik to Koliganek Road Feasibility Study  
Thursday, October 23, 2025

### Sign-In Sheet

	Name	Phone (optional)	Email (optional)
1.	Mary Olympic	907 693 8173	newstuyhok@hotmail.com
2.	Joe Kohler	907 693 6401	joekohler917@gmail.com
3.	Lisa Andrew	907-693-1072	lisa.andrew13@hotmail.com
4.	Katalia Wlassi Wiley	907-693-6047	
5.	Nally Gust		
6.			
7.			
8.			
9.			
10.			
11.			
12.			
13.			
14.			
15.			
16.			
17.			
18.			
19.			
20.			

# BBNA ALEKNAGIK TO KOLIGANEK ROAD FEASIBILITY STUDY

## NEW STUYAHOK COMMUNITY MEETING



**Thursday,  
October 23, 2025  
4 PM**

- CQ Building
- Voice your opinions about the project
- Refreshments provided
- Door prizes

For more information:  
Isaac Pearson  
(907) 743-9313  
[ipearson@bristol-companies.com](mailto:ipearson@bristol-companies.com)

We are excited to announce the launch of the BBNA Aleknagik–Koliganek Road Feasibility Study, an early-stage project to evaluate the potential for developing a road connection between the communities of Aleknagik, Ekwok, New Stuyahok, Koliganek, and Portage Creek.

Come learn more about this project at the first round of community meetings. The project planners will be available for any questions and to receive feedback from the public. Refreshments and door prizes will be provided for those that attend. Invite your friends and family so the whole community is involved!

Posted: 9/23/2025

**Check out the website for more  
information: [A2KRoadStudy.com](https://A2KRoadStudy.com)**



Bristol Bay Native Association

BBNA A2K Road Feasibility Study Public Meeting #1  
New Stuyahok, Alaska  
Date 10/23/2025

## Welcome

We are here to discuss:

# BBNA Aleknagik to Koliganek Road Feasibility Study

We are:  
Bristol Engineering Services Company, LLC  
Isaac Pearson, P.E.  
Brandon Shayan



1

---

---

---

---

---

---


---

---

1

## Presentation Overview

- ▶ Project Background / Information
- ▶ Public Involvement Overview
- ▶ Project Team
- ▶ Project Schedule/Next Steps
- ▶ What is Connectivity?
- ▶ Community Input on Roadway
  - Opportunities and Threats
  - Where Could a Road go?
- ▶ Questions



2

---

---

---

---

---

---




---

---

2

## Project Champion and Funding

- ▶ Project Champion
  - Bristol Bay Native Association Department of Transportation and Infrastructure Development
- ▶ Funding Sources
  - Rebuilding American Infrastructure with Sustainability and Equity (RAISE) Grant Program, FY 2023
  - Denali Commission (DC)

3

---

---

---

---

---

---

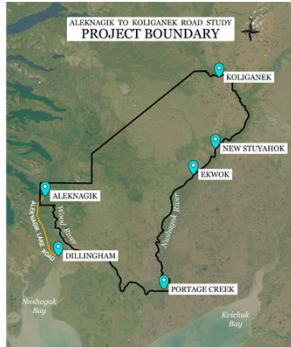
---

---

3

### Primary Stakeholders

- ▶ Community of,
  - Aleknagik
  - Dillingham
  - Ekwok
  - Koliganek
  - New Stuyahok
  - Portage Creek



4

4

---

---

---

---

---

---

---

---

### Project Need

- ▶ Understand ways to reduce costs of delivering goods, services, and people
- ▶ Provide year-round all-weather access to communities to enhance public safety
- ▶ Provide information to communities about connectivity feasibility

5

5

---

---

---

---

---

---

---

---

### Project Objectives

- ▶ Understand communities' thoughts about road connections
- ▶ Evaluate cultural, environmental, economic, and social impacts of a road connection
- ▶ Evaluate the feasibility of road connections
- ▶ Develop a report that summarizes the findings

6

6

---

---

---

---

---

---

---

---

### Project Do's and Do Not's

#### What This Study Does

- ✓ Considers the possibility of road connections between Aleknagik, Portage Creek, Ekwo, New Stuyahok, and Kotiganek.
- ✓ Evaluates both pros and cons of the potential roads including economic, environmental, social, and cultural considerations.
- ✓ Identifies if communities want road connections or not.
- ✓ Helps communities make informed decisions about road connection planning.
- ✓ Identifies potential road corridors based on community input and traditional local knowledge.

#### What This Study Does NOT Do

- ✗ Make decisions for communities.
- ✗ Build roads.
- ✗ Solicit input from outside interests.
- ✗ Promote the Nuyakuk Hydroelectric Project.
- ✗ Promote mining or resource development.

7

7

---

---

---

---

---

---

---

---

---

---

### Project Approach

- ▶ Public Involvement
  - Initial Stakeholder Outreach / Website
  - Local Stakeholder / Public Meetings / Public Survey – (Two Rounds)
  - Draft Individual / Regional Stakeholder Meetings
  - Final-Draft Review Stakeholder Meeting
- ▶ Study Development (Draft, Final-draft, Final)
  - Public Involvement
  - Cultural Resources / Environmental
  - Economic Analysis
  - Geotechnical
  - Land Status and Corridor Development

8

8

---

---

---

---

---

---

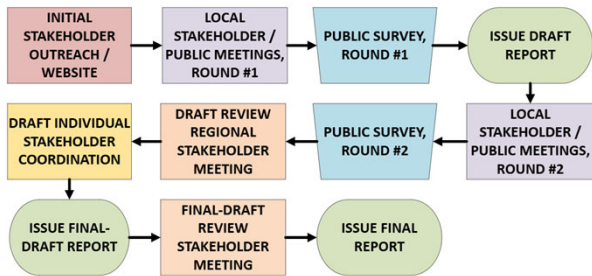
---

---

---

---

### Project Approach



9

9

---

---

---

---

---

---

---

---

---

---

### Public / Stakeholder Involvement Overview

- ▶ Purpose of Public Engagement
  - Ensure transparency, inclusivity, and collaboration throughout the study
  - Gather local insights to inform reporting
- ▶ Engagement Tools
  - Project Website: Project updates, meeting materials, contact information
  - Public Surveys: To gather broad input
  - In-Person & Virtual Meetings: Local and regional reach
  - Target Outreach: For key stakeholders and communities

10

10

---

---

---

---

---

---

---

---

### Project Team

- |  |   |
|--|---|
| <ul style="list-style-type: none"> <li>▶ Agnew::Beck           <ul style="list-style-type: none"> <li>◦ Economic Analysis</li> <li>◦ Public Involvement</li> </ul> </li> <li>▶ Bristol           <ul style="list-style-type: none"> <li>◦ Land Status Mapping</li> <li>◦ Public Involvement</li> <li>◦ Analysis and Reporting</li> <li>◦ Project Management</li> </ul> </li> </ul> | <ul style="list-style-type: none"> <li>▶ Midnight Sun Environmental           <ul style="list-style-type: none"> <li>◦ Environment Analysis</li> </ul> </li> <li>▶ Shannon &amp; Wilson           <ul style="list-style-type: none"> <li>◦ Geotechnical Reporting</li> </ul> </li> <li>▶ True North           <ul style="list-style-type: none"> <li>◦ Cultural Resources Report</li> </ul> </li> </ul> |
|--|---|



11

11

---

---

---

---

---

---

---

---

### Project Schedule / Next Steps

- ▶ Draft A2K Study February / March 2026
- ▶ Public Meeting Round #2 April 2026
- ▶ Final Draft A2K Study August 2026
- ▶ Final A2K Study December 2026

Check out the website: [A2KRoadStudy.com](http://A2KRoadStudy.com)



12

12

---

---

---

---

---

---

---

---



13

13

---

---

---

---

---

---

---

---

**What is Connectivity?**

- ▶ This Project Considers: Movement of people, goods and services
- ▶ Current Connectivity in Study Area
  - Air, Land, and Water
- ▶ Each mode has limitations: Cost, Seasons, and Weather.
- ▶ This Project's Focus is to understand the feasibility of a year-round overland road connection.

**Let's talk about this together!**

14

14

---

---

---

---

---

---

---

---

**Considerations for New Roadways**

- ▶ Community Needs & Priorities
  - How would a road connection affect your daily life (travel, access to food, healthcare, jobs)?
  - What destinations are most important for you (nearby communities, regional hubs, subsistence areas)?
  - Are there times of year when better transportation is especially needed?

15

15

---

---

---

---

---

---

---

---

### Considerations for New Roadways

- ▶ Cultural & Subsistence Considerations
  - What traditional hunting, fishing, or gathering areas might the road affect?
  - Are there cultural or sacred sites that should be avoided?
  - How might a road change seasonal travel by snowmachine, boat, or ATV?

16

16

---

---

---

---

---

---

---

---

### Considerations for New Roadways

- ▶ Environmental & Season Factors
  - Are there areas that are especially important to avoid (wetlands, caribou migration paths, fish streams)?
  - How do you see climate change affecting the land in the coming years?

17

17

---

---

---

---

---

---

---

---

### Considerations for New Roadways

- ▶ Economic & Social Impacts
  - What opportunities might the road bring (jobs, lower costs of goods, tourism)?
  - What risks do you see (outside access to subsistence resources, increased alcohol/drug trafficking, loss of local control)?

18

18

---

---

---

---

---

---

---

---

### Evaluation of Opportunities and Threats

- ▶ As a group let's discuss. Think of a road of either to neighboring communities or the hub.
- ▶ **Opportunities:**  
What good things could a road bring in the future?
- ▶ **Threats:**  
What risks could come with a road, or from outside forces?"

19

19

---

---

---

---

---

---

---

---

### Opportunities and Threats

- ▶ Community Needs & Priorities
- ▶ Cultural & Subsistence Considerations
- ▶ Environmental & Season Factors
- ▶ Economic & Social Impacts

20

20

---

---

---

---

---

---

---

---



21

21

---

---

---

---

---

---

---

---

### Where Could a Road Go?

- ▶ Things to consider:
  - Geographic feasibility
    - Terrain challenges (mountains, rivers, wetlands, permafrost)
    - Accessibility in all seasons
  - Environmental Factors
    - Sensitive ecosystems, wildlife corridors
    - Subsistence resource areas
  - Cultural and Historical Resources
    - Sites of cultural or historical importance
  - Community Preferences
    - Connections people would find useful
    - Proximity of road to the townsite

22

22

---

---

---

---

---

---

---

---

### Where Could a Road Go?

- ▶ We want to hear from you!
  - If a road were considered, where would you want it to go, or not go?
  - Where should be avoided?
- ▶ Let's mark up some maps!!!
- ▶ Also, Let's do some surveys!!!

23

23

---

---

---

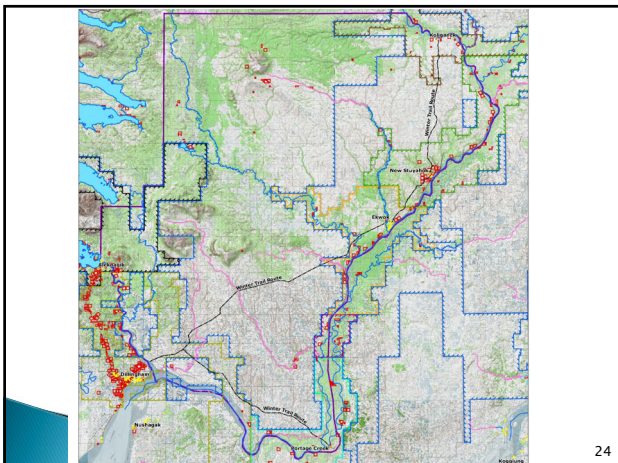
---

---

---

---

---



24

24

---

---

---

---

---

---

---

---



25

---

---

---

---

---

---

---

---



26

---

---

---

---

---

---

---

---



27

---

---

---

---

---

---

---

---

# Aleknagik to Koliganek Road Feasibility Study



## Public Meeting #1

### Welcome and Thank You!

Thank you for attending the public meeting for the Aleknagik to Koliganek Road Feasibility Study (A2K Study). This is an early-stage planning project that evaluates the potential for developing road connections between the communities of Aleknagik, Portage Creek, Ekwok, New Stuyahok, and Koliganek.

### What Is This Study About?

The A2K Study aims to:

- Gather input from local residents, tribes, and stakeholders;
- Understand possible impacts on social, cultural, and environmental values;
- Analyze potential economic opportunities;
- Evaluate possible routes between the communities;
- Summarize findings in a comprehensive report.

**⊘ Important Note:** This study does not propose road construction at this stage. Its purpose is to understand community interest and determine whether a road project could be feasible in the future.

### We Want To Hear From You!

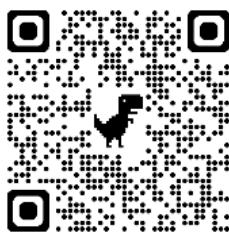
Your input is vital to this study. Please share your thoughts throughout online public survey:

More information about the survey on the back of this handout.

### Stay Connected

For updates, meeting notices, and study documents, please visit the project website:

[www.A2KRoadStudy.com](http://www.A2KRoadStudy.com)



# Aleknagik to Koliganek Road Feasibility Study



## Community Survey

The goal of this survey is to collect feedback around the potential impacts on the cost of living, quality of life, regional travel patterns, and subsistence activities from the people living in the communities that could potentially be affected by future road connections. This survey will also help gauge community interest and document community concerns around future road connections.



Survey respondents will be eligible to be entered into a drawing for an Apple iPad.

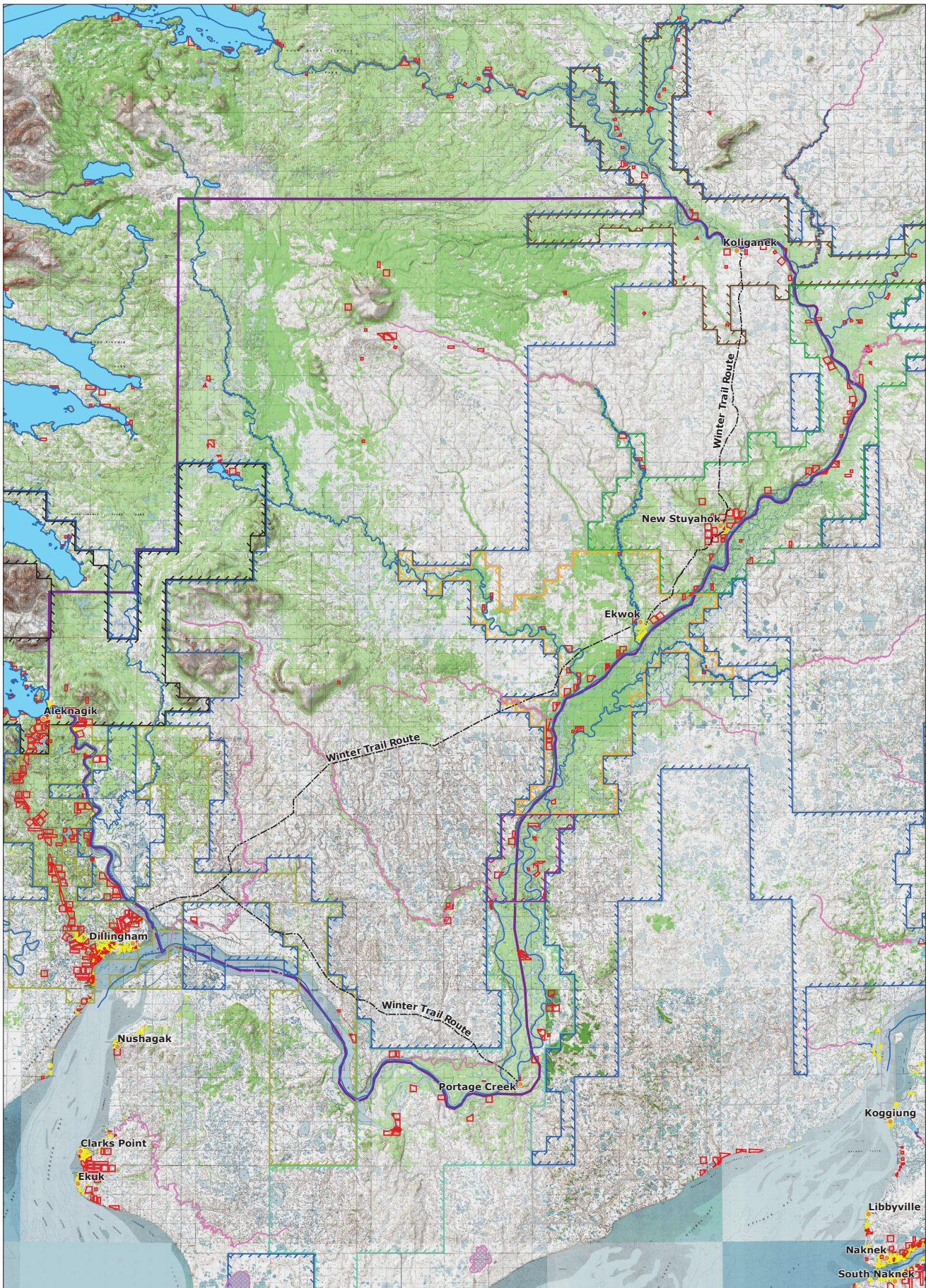
Visit the project website to access the survey and for more information on the study:

[A2KRoadStudy.com](http://A2KRoadStudy.com)



BBNA is committed to ensuring that this study reflects the voices and priorities of our member Tribal communities, with a focus on cultural respect, economic opportunity, and community-driven decision-making.





Sources:  
 BLM: [https://gis.blm.gov/akarcgis/rest/services/Land\\_Status/BLM\\_AK\\_Land\\_Status\\_Conveyed\\_Lands/FeatureServer](https://gis.blm.gov/akarcgis/rest/services/Land_Status/BLM_AK_Land_Status_Conveyed_Lands/FeatureServer)  
 State of Alaska Geo Portal: Navigable Waters  
 U.S. Fish and Wildlife Service: [https://services.arcgis.com/QVNGdaPbd4LUkLV/arcgis/rest/services/FWS\\_R7\\_Realty\\_BLM\\_Land\\_Status\\_feature\\_layer/FeatureServer](https://services.arcgis.com/QVNGdaPbd4LUkLV/arcgis/rest/services/FWS_R7_Realty_BLM_Land_Status_feature_layer/FeatureServer)  
 Note:  
 Select source features were generalized for map readability.

- |                 |                              |                                       |               |  |
|-----------------|------------------------------|---------------------------------------|---------------|--|
| <b>Legend</b>   | City                         | Navigable                             | Dillingham    | BLM's Land Status of Alaska (3/9/2017) |
| Conflict        | Unknown                      | BLM AK Native Allotment Conveyed Land | Ekwok         | Study Boundary                         |
| Unknown         | BLM AK Private Conveyed Land | Aleknagik                             | Kogiagak      |  |
| Tidal Influence | BBNC (Other)                 | New Stuyahok                          | Portage Creek |  |
| Winter Trail    |                              | Select State Land                     |               |  |



DATUM:  
 NAD83  
 PROJECTION:  
 SP AK Z6 FT  
 DATE:  
 10/3/2025

